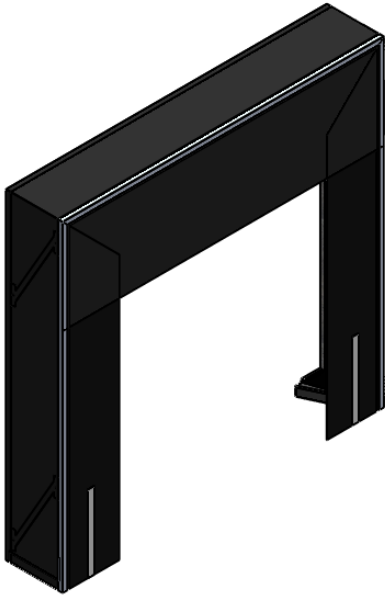
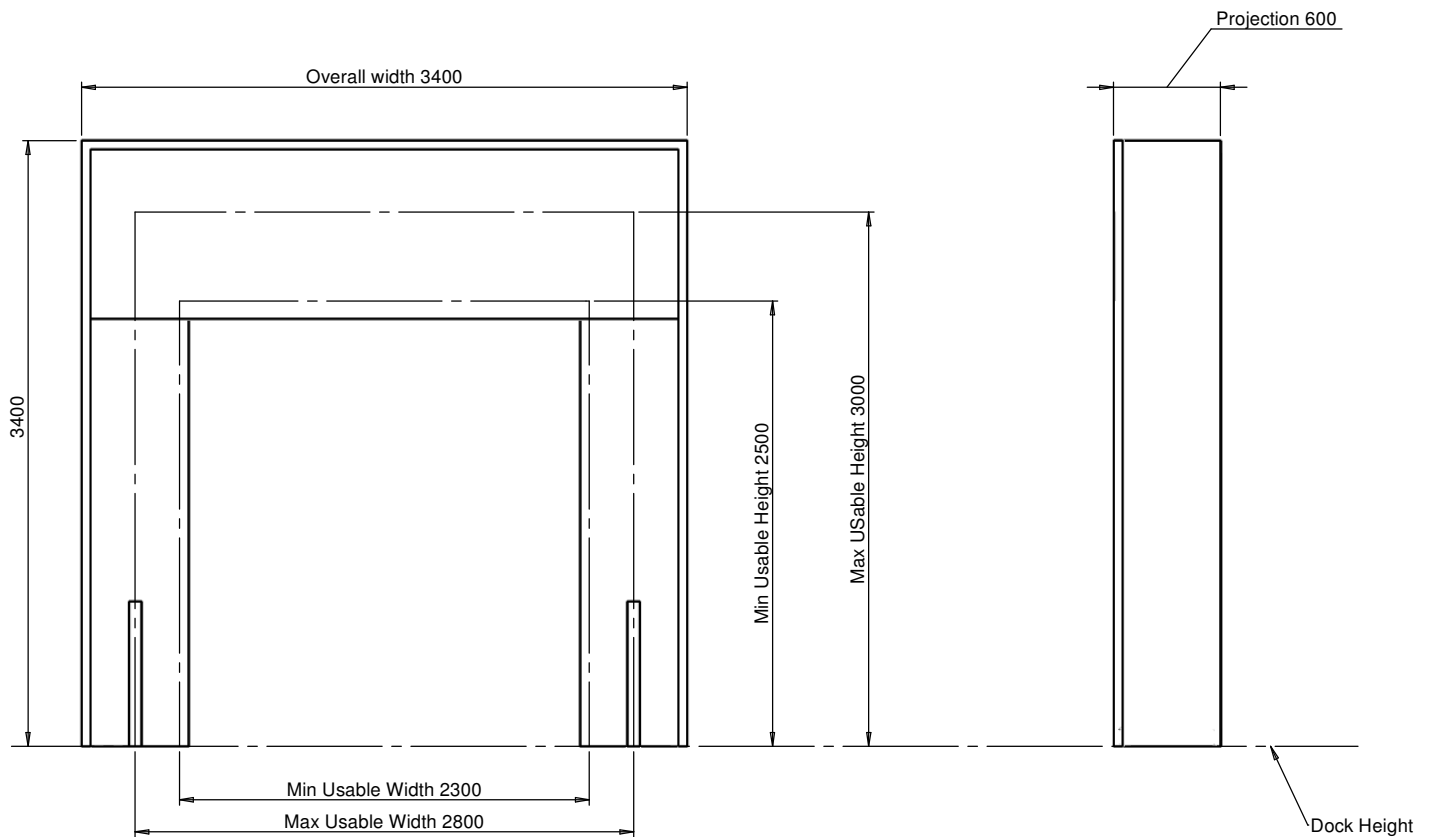


PART No: TCDS403016



Designed to protect both people and goods from temperature fluctuations and weather conditions.
The collapsible nature of this product means the frame will fold back against the building if hit by a poorly aligned vehicle.

MATERIAL	Polyester Trevira fabric with PVC UV resistant coating on both sides ensuring very high tear resistance.
WEIGHT	150 Kg
ESTIMATED LEADTIME	6 - 8 Weeks
OPTIONAL EXTRAS	TWAC - Alignment Curbs TCDS2418 - Corner Sealing Pad



Other sizes available on request.

All dimensions shown are in millimetres and are intended for reference purposes only; exact product measurements may vary due to applied tolerances and methods of manufacture

