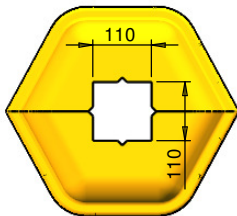
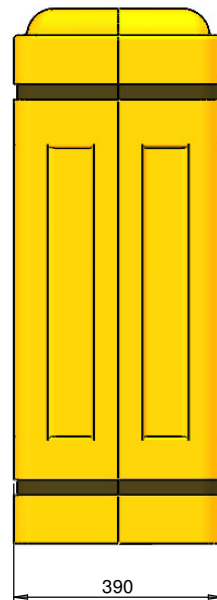
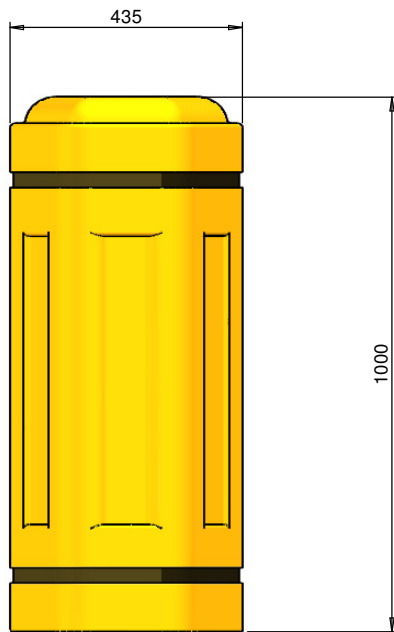




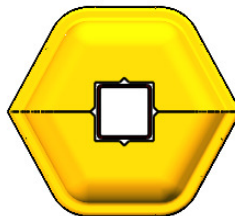
PART No: TWCP-5

This quick and easy to install product is ideal for use in areas where there are space limitations. It fits smaller and circular columns, and is ideal for use on mezzanine floor applications. There are no fixings required, the product simply fits over the base plate.

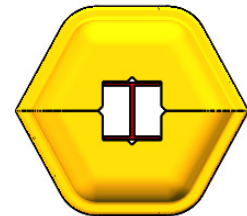
MATERIAL	LINEAR LOW DENSITY POLYETHYLENE
WEIGHT	10 Kg
ESTIMATED LEADTIME	EX STOCK
ALTERNATIVE OPTIONS	TWC-6 TO ACCOMODATE LARGER COLUMNS ANOTHER TWCP-5 FOR DOUBLE HEIGHT PROTECTION



HOLE DIMENSIONS



SHOWN WITH SQUARE COLUMN



SHOWN WITH H-COLUMN

All dimensions shown are in millimetres and are intended for reference purposes only; exact product measurements may vary due to applied tolerances and methods of manufacture

