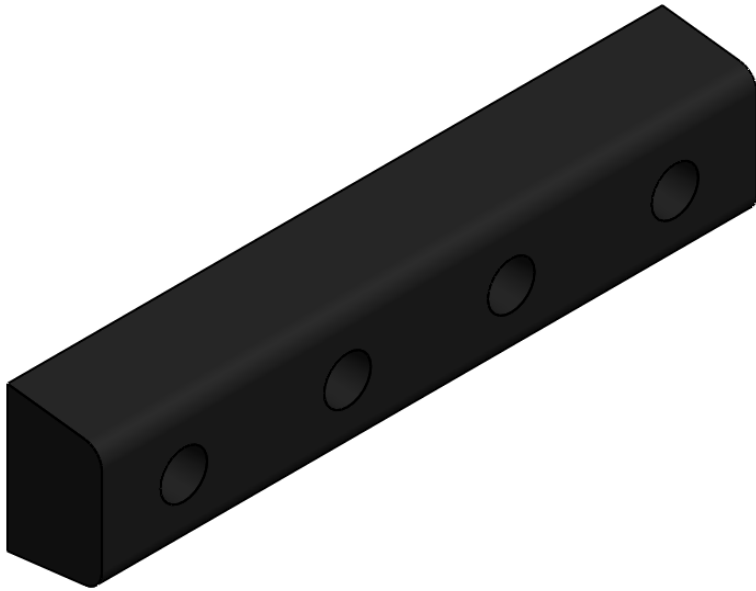
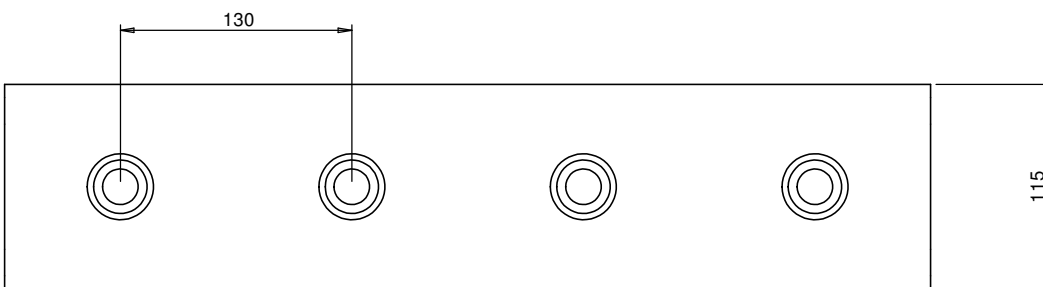
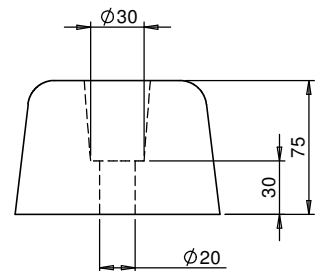
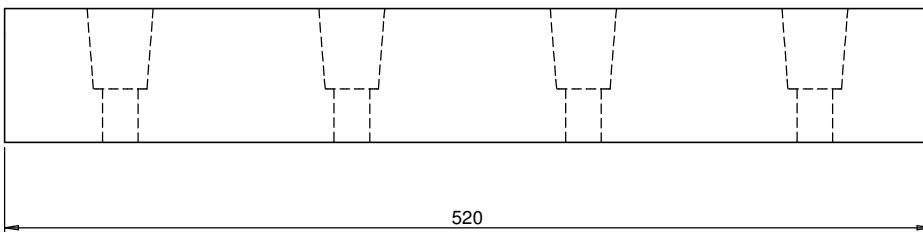


PART No: TWB-20



Dock Bumpers reduce damage to loading docks, equipment and buildings caused by vehicle impact. This bumper can be used in many situations, but they are particularly suited to mini dock levellers.

MATERIAL	Rubber
WEIGHT	7 Kg
ESTIMATED LEADTIME	EX STOCK
OPTIONAL EXTRAS	Fitted by 16mm Diameter Fixings. Please ask for details.



All dimensions shown are in millimetres and are intended for reference purposes only;
exact product measurements may vary due to applied tolerances and methods of manufacture

