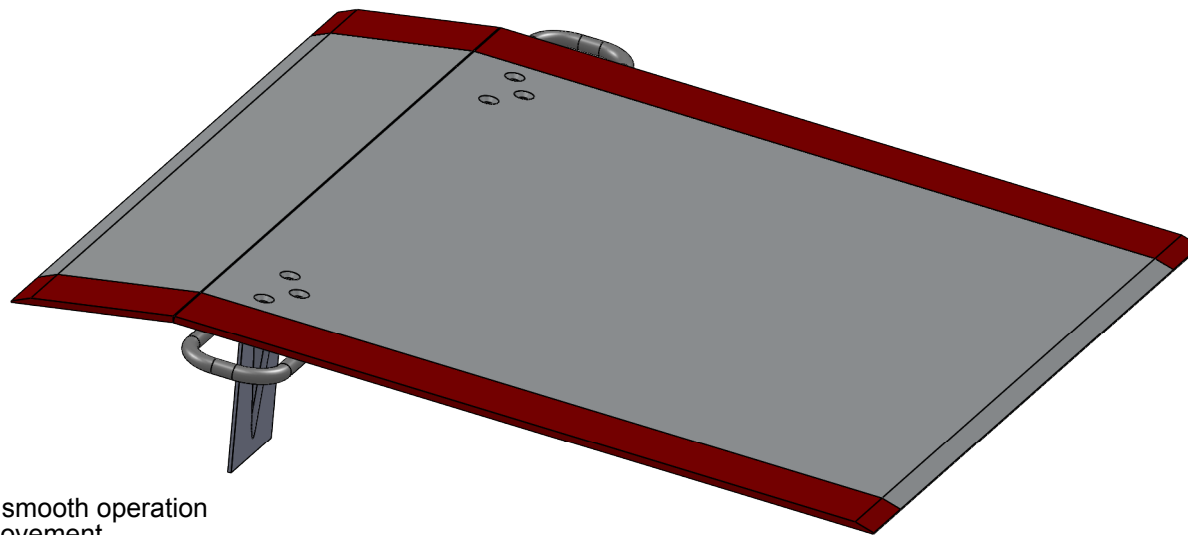


# Dockplate Options

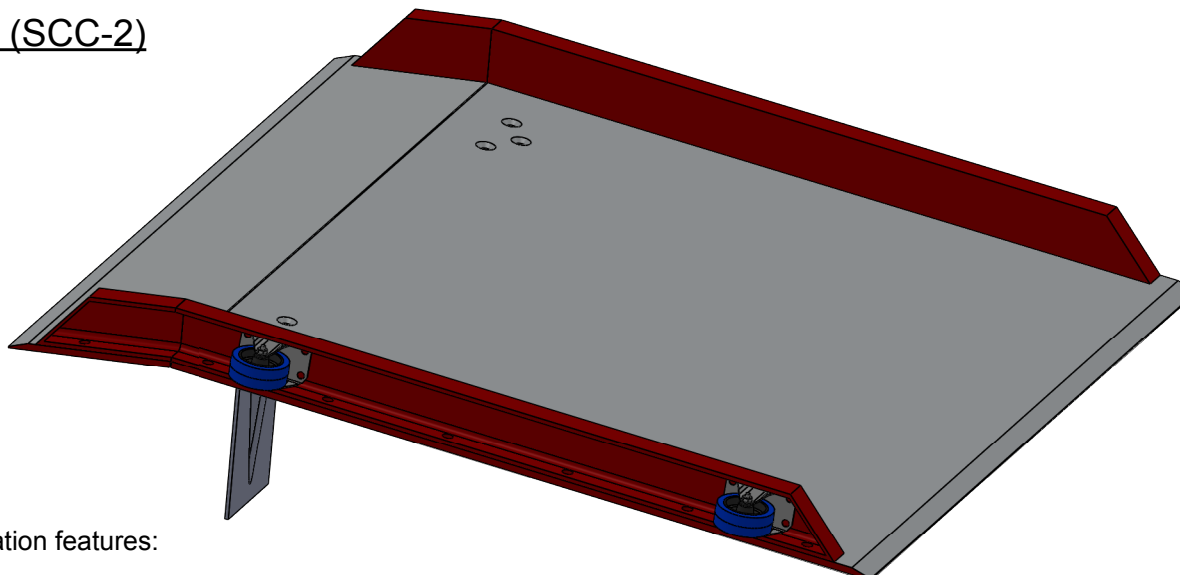
## Standard



Standard Dockplates features:

- Anti-slip treadplate finish
- Crowned (10°) & bevelled for smooth operation
- Loop type handles for easy movement
- One pair of locking legs to prevent movement
- Painted side guidelines

## Side Curbs & Castors (SCC-2)



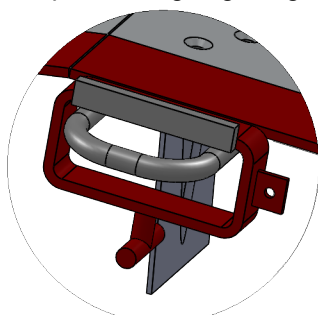
Side Curbs & Castors modification features:

- 75mm safety side rail
- Castors fitted to aid movement
- Loop handles removed

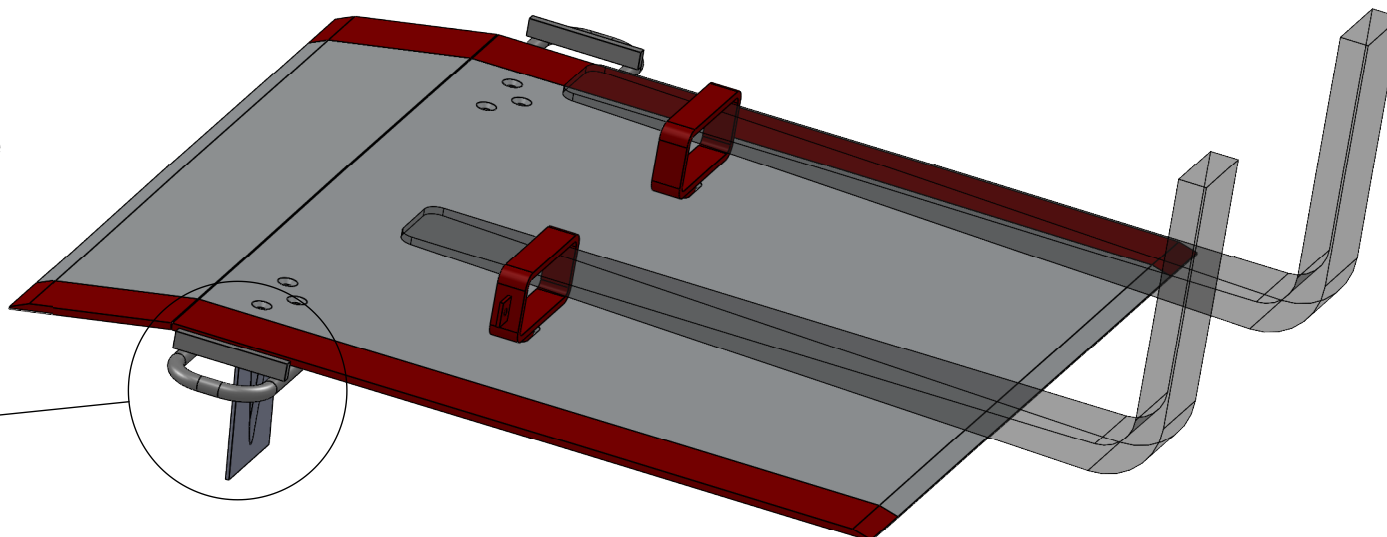
## Fork Truck Lifting Handles (FTH-1)

Forktruck Lifting Handles modification features:

- Handles are placed through slots in plate, and rotated 90° for movement with FLT.
- Once the plate is in position, the handles are stored over the loop type lifting handles.
- Handles secured to plate with chain to prevent separation/loss.
- Recommended for all plates weighing 40kg and over.

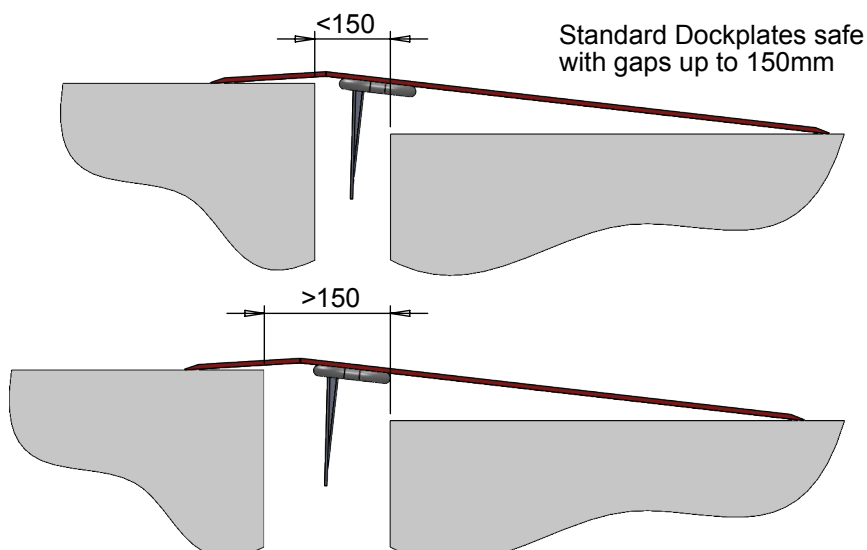


Handle in stored position.

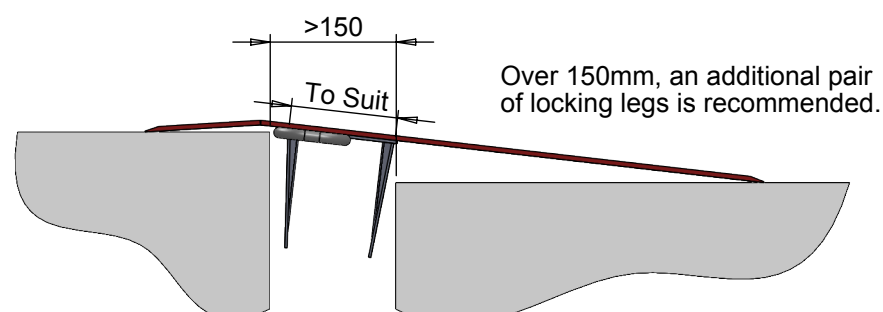


Note: Securing chains omitted for clarity.

## Fixed Span Locking Legs (FSL-1)



Over 150mm, there is significant risk of the plate separating from vehicle - this is not recommended.



Contact us now for assistance selecting the correct equipment for your application.

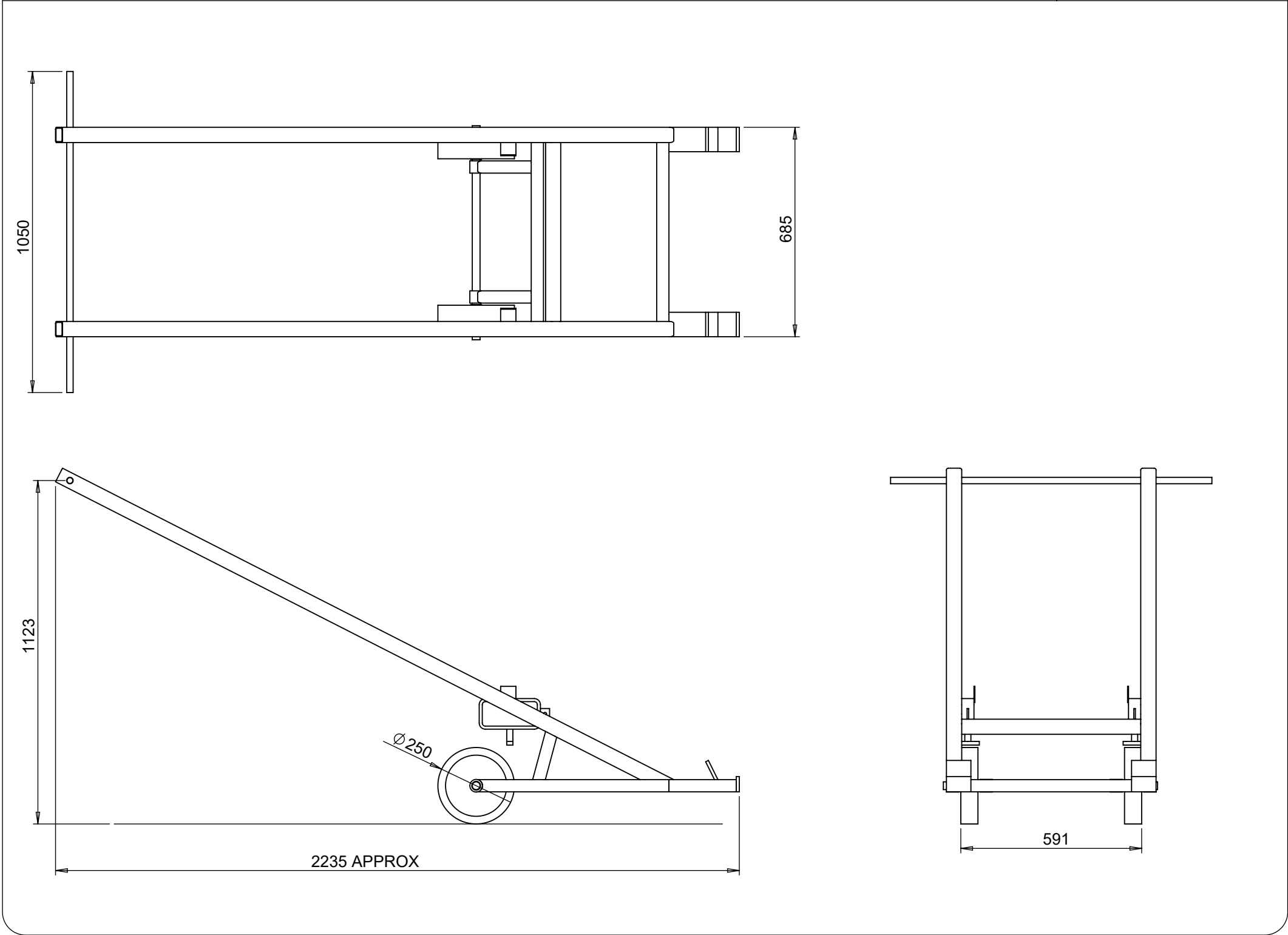


PART No: TW-DPT-001

The DPT, Dockplate Trolley, will assist in the manual movement of large dockplates for sites that do not have fork lift trucks available.

The trolley gives a mechanical advantage of up to 2.1x with a vertical lift force ratio of 1.7-1.9x depending on the handle height

|                    |                   |
|--------------------|-------------------|
| MATERIAL           | Steel             |
| WEIGHT             | 65Kg Approx       |
| ESTIMATED LEADTIME | TBC               |
| REQUIRED EXTRAS    | FTH-1             |
| OPTIONAL EXTRAS    | Longer Acting Arm |



All dimensions shown are in millimetres and are intended for reference purposes only; exact product measurements may vary due to applied tolerances and methods of manufacture

*The Intellectual Property, Design Patents, Copyright and Commercial Rights of this drawing remain the private property of Thorworld Industries Ltd and may not be copied, replicated or used by any Third Parties without prior written approval.*

